

EXTERNAL MAGLOCKS

ML-MINI-EXML

Mini External Magnet

Input: 12v-24v DC

Current Draw: 500ma-240ma

Holding Force: 600lbs / 272kg

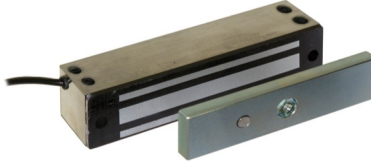
IP rating: IP67

Monitoring:
Yes / Lock

Magnet: 203 x 44 x 38mm

Armature: 180 x 35 x 10mm

ML-MINI-EXML



IP RATING

1st digit shows protection against solid particles.

SOLIDS

0- No Protection

- 1- Protection against 50mm +
- 2- Protection against 12.5mm +
- 3- Protection against 2.5mm +
- 4- Protection against 1mm +
- 5- Protection against Amount of Dust
- 6- DUST TIGHT

2nd Digit shows protection against water.

WATER

0- No Protection

- 1- Protection against vertical Dripping water
- 2- Protection against dripping water to a angle of 15degree
- 3- Protection against spraying
- 4- Protection against splashing
- 5- Protection against jetting
- 6- Protection against powerful jetting
- 7- Protection against temporary immersion
- 8- Protection against continuous immersion.

ML-STD-EXML

Standard External Magnet

Input: 12v-24v DC

Current Draw: 500ma-240ma

Holding Force: 1200lbs / 545kg

IP rating: IP67

Monitoring:
Yes / Lock

Magnet: 222 x 60 x 40mm

Armature: 185x 60 x 15mm

ML-STD-EXML



Access Security Products Limited
AEMS Building, 127 Upper Thrift Street
Northampton NN1 5HR

T: 01604 582170 F: 01604 603306
E: sales@accesssecurityproducts.co.uk
W: www.accesssecurityproducts.co.uk